



STANDARD HANDRAIL



We stock a standard, fibre glass handrail system that offers incredible durability and is easy to fabricate and install. Robust and sturdy, our standard handrail outperforms metallic and timber alternatives due to GRP's high strength-to-weight ratio and low installation and maintenance costs.

Our standard handrail system consists of four profiles which are available in 6 metre lengths. The handrail is easy to make by drilling a 39mm hole into the box section Stantion Post for the tube to be inserted for the knee rail. The handrail profile sits on top and the toe rail at the base.



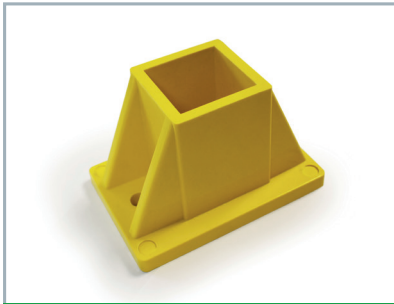
Independently tested by the Engineering Department at Lancaster University, our standard handrail system meets the requirements of BS4592:0 2006+A1 2012 Industrial Flooring, Stairs and Handrails for Heavy Duty (0.74kN/m).

Our standard GRP handrail system exhibits excellent resistance to a wide range of chemicals, including acids, alkalis, fresh and salt water, ethylene glycol, petrol and other fuel oils. It is not recommended for extensive exposure to acids and alkalis



Standard Hand Rails

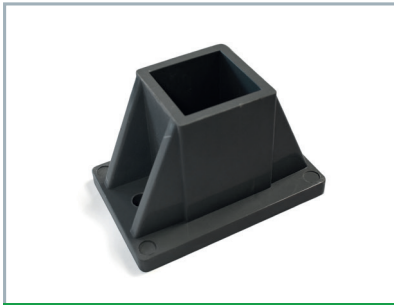
Stock Code	Profile Type	Dimensions mm	Weight kg/m	Colour Options
HR690IG/Y	Handrail Profile	76 x 50	1.47	Grey & Yellow
TU624IG/Y	Knee Rail Tube	38od x 32 id	0.62	Grey & Yellow
B0620IG/IY	Stantion Posts -Box section	51x51x6.35mm	2.17	Grey & Yellow
WT606IG/Y	Toe Rail (Kick Plate)	150 x 3	1.30	Grey & Yellow



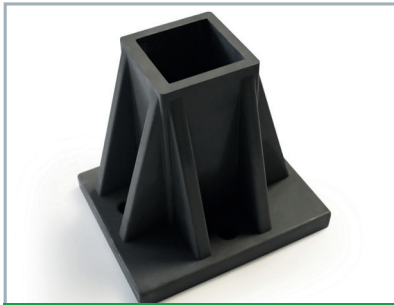
2 HOLE 51 BOX FEET YELLOW



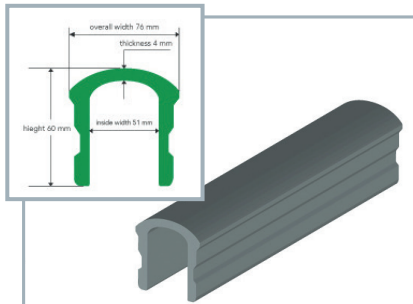
3 HOLE 51 BOX FEET YELLOW



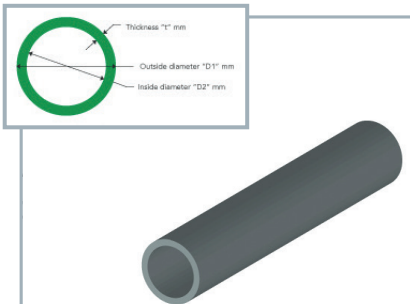
2 HOLE 51 BOX FEET GREY



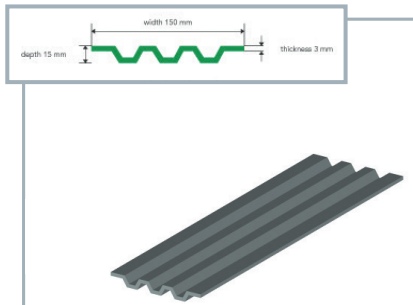
3 HOLE 51 BOX FEET GREY



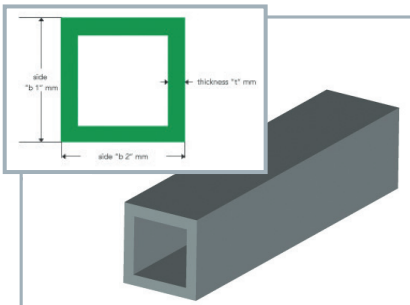
HAND RAIL



ROUND TUBE



TOE RAIL (KICK PLATE)



BOX SECTION



BOX & TUBE END CAPS

